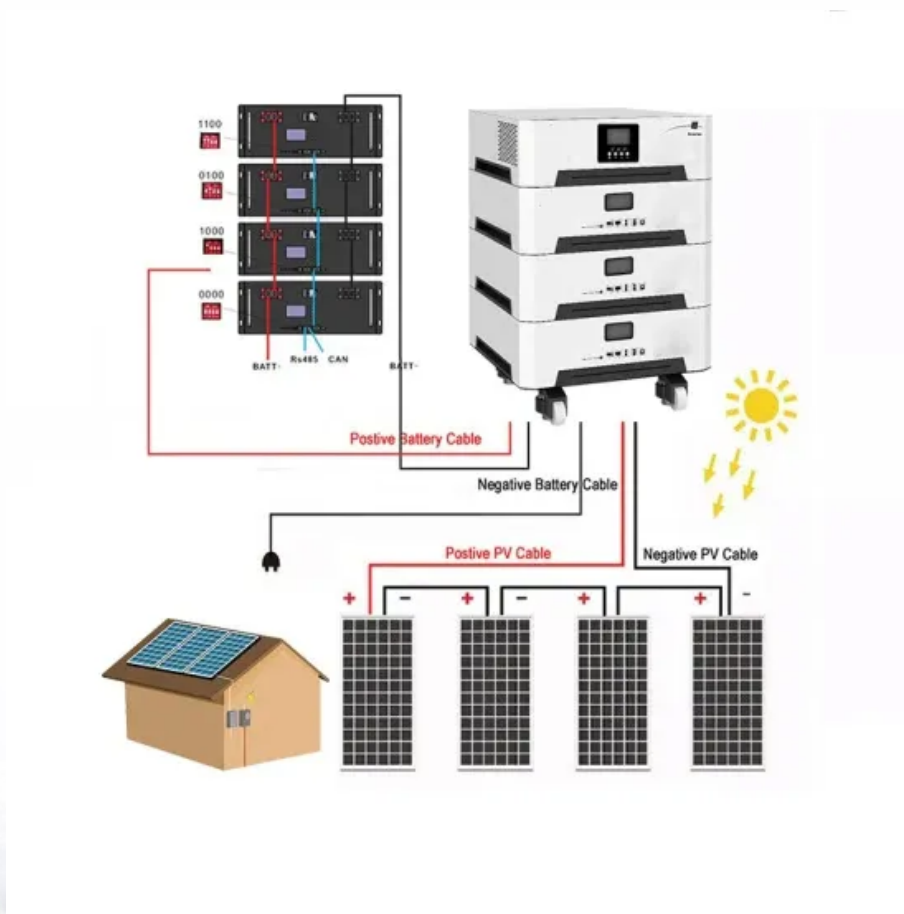


## ContainerPower Energy Solutions

# What is the output voltage of a 550w monocrystalline solar panel



## Overview

---

What is 550W monocrystalline solar panel?

550W Monocrystalline Solar Panel. WCCSOLAR Types of solar panel High efficiency 144 cells, it is one of the most powerful in the 24V range for use in 12 volt solar installations, 24 volt solar installations, 48 volt solar installations, self-consumption grid injection installations and pumping installations.

How many volts does a solar panel produce?

Open circuit 20.88V voltage is the voltage that comes directly from the 36-cell solar panel. When we are asking how many volts do solar panels produce, we usually have this voltage in mind. For maximum power voltage ( $V_{mp}$ ), you can read a good explanation of what it is on the PV Education website.

What are the characteristics of a 550W solar panel?

TEMPERATURE CHARACTERISTICS and advanced manufacturing technology. ammonia and hail tests). Possible resistance to induced degradation (PID). Positive power tolerance of 0 ~ +3%. The 550W Solar Panel is one of the most powerful in the 24V range for use in 12, 24 and 48 volt solar installations.

What is maximum power voltage ( $V_{MP}$ )?

Maximum Power Voltage ( $V_{mp}$ ). This is the voltage when the solar panel produces its maximum power output; we have the maximum power voltage and current here. Here is the setup of a solar panel: Every solar panel is comprised of PV cells, connected in series.

What is a 550 W phono solar panel?

This 550 W Phono Solar solar panel also has a generous 12-year product warranty. This model's construction makes it perfect for both residential and business rooftops. Durability and strength are increased by using a strong, robust frame built from anodized aluminum. A significant snow load of up to 5400 Pa may be supported by the model.

What is a typical open circuit voltage of a solar panel?

To be more accurate, a typical open circuit voltage of a solar cell is 0.58 volts (at 77°F or 25°C). All the PV cells in all solar panels have the same 0.58V voltage. Because we connect them in series, the total output voltage is the sum of the voltages of individual PV cells. Within the solar panel, the PV cells are wired in series.

## What is the output voltage of a 550w monocrystalline solar panel

---

### Contact Us

---

For catalog requests, pricing, or partnerships, please visit:  
<https://websparafotografos.es>