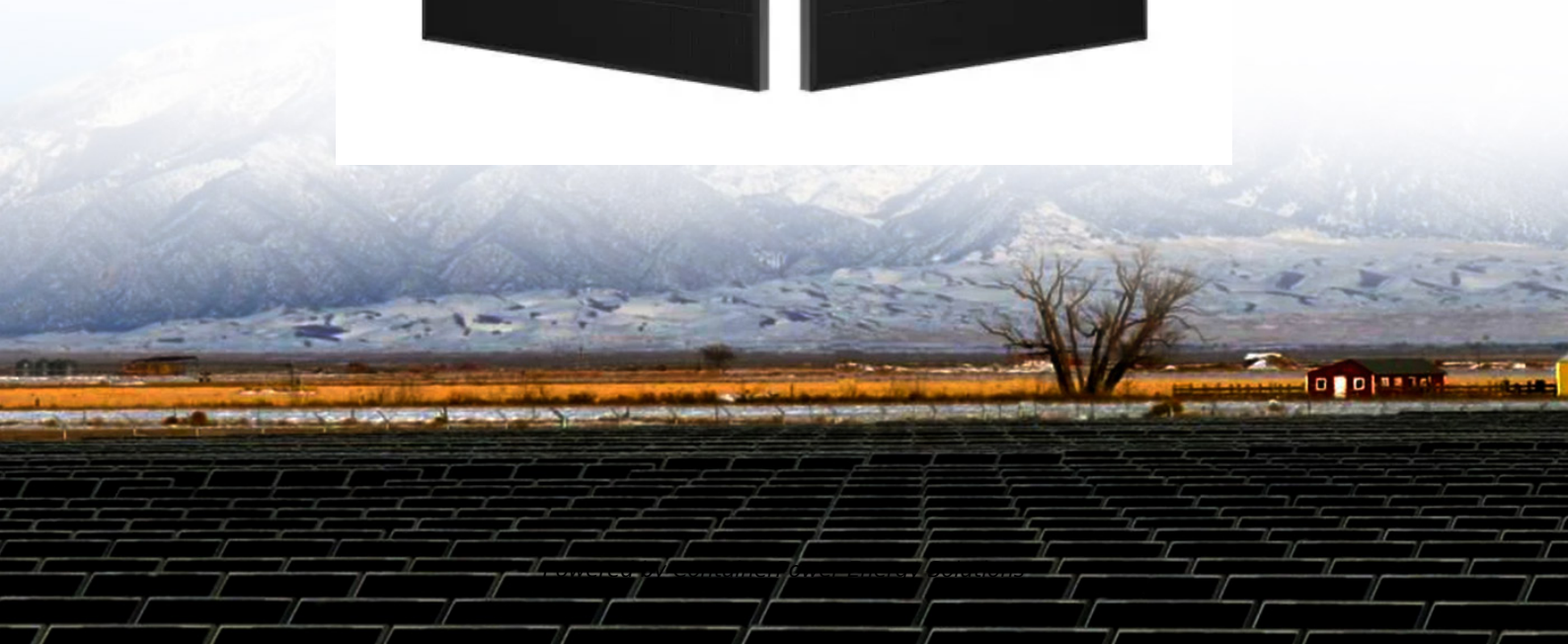
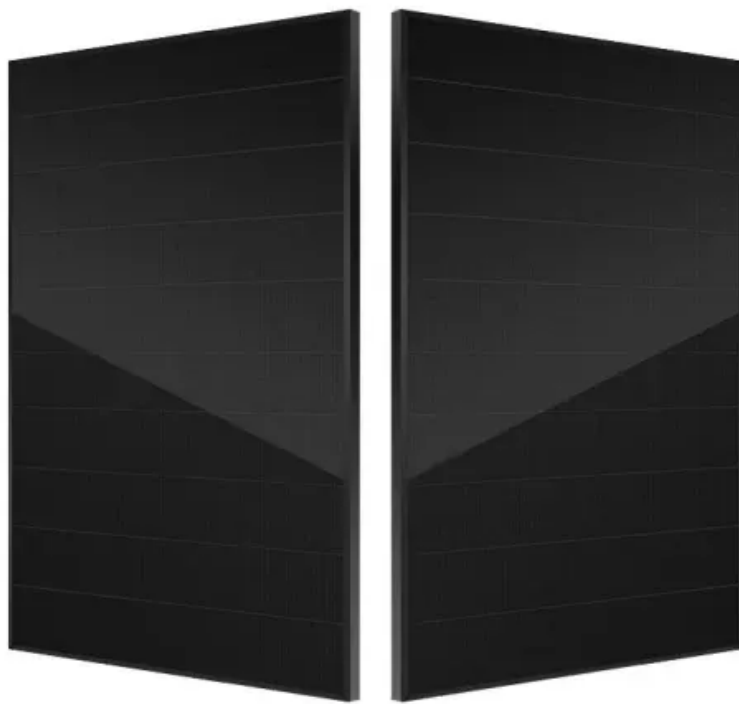


## ContainerPower Energy Solutions

# What does the Russian home solar integrated machine 15a mean



## Overview

---

That's based on the temperature adjusted Voc of your panels. And it has a max PV short circuit current of 15A. This means you can't put more than 2 panels in parallel without exceeding the short circuit current.

That's based on the temperature adjusted Voc of your panels. And it has a max PV short circuit current of 15A. This means you can't put more than 2 panels in parallel without exceeding the short circuit current.

● 15A solar charge controller supports both 12V and 24V systems with automatic voltage recognition, strong charge voltage of 14.8V/29.6V, balanced charge voltage of 14.5V/29.0V. ● Utilizing PWM technology, this controller provides multi-stage charging, including bulk, absorption, and float stages.

It is a cost effective, intelligent solar inverter which accepts Solar & Utility input at the same time. The comprehensive LCD display offers userconfigurable and easy-accessible button adjustment such as battery charging current, AC/solar charger priority and DC priority. When battery voltage is.

The outlets in your house can deliver 15A, but your phone charger uses less than 1A. Your TV doesn't draw 15A all the time when it is on. The outlets deliver 120VAC at up to 15A. Similarly, the solar system will deliver 150V at up to 30A - but your battery charger doesn't have to take all 30A.

Connect the positive and negative wires from the battery into the terminals with the battery icon ensuring polarity is correct. 2. The screen should turn on and display the battery voltage. 3. Connect positive and negative solar input into the two terminals with the solar icon, ensuring polarity is.

Gigawatt (GW): We measure the cumulative capacity of community solar nationwide in terms of GW. One GW = 1,000 megawatts. Inverter: Component of a solar panel system that converts the electricity generated by solar panels into a format that can be used to power your home. Kilowatt (kW): How we.

Here's what you need to know about voltage for solar panels: Open Circuit Voltage (Voc): This is the maximum voltage your panel can produce, usually measured on a bright, cold morning. Maximum Power Voltage (Vmp): This is the voltage at which your panel operates most efficiently. If voltage is. What is a 15A solar panel?

Normally, if the product is sane, the 15A specification should mean the maximum current it will draw from the solar panels. So it should be possible to use panels capable of more current, and if there is a lot of sun, it would simply max out at 15A and take whatever power it can.

Can a 15A panel run at 20A?

Sometimes the unit can handle a '15A' panel that is new, and cold, and runs at 16.5A, (You can ask the supplier about that) and sometimes you may find a 15A unit de-rated to '13.5A' for special purposes, but it's never going to be 20A for a 15A unit. Your panel voltage in must remain below 150 V at all times.

How to set up Kings aksr-rg15a PWM controller for General charging?

However, to set up the KINGS AKSR-RG15A PWM controller for general charging: 1. Connect the battery's positive and negative wires to the terminals marked with the battery icon, ensuring correct polarity. 2. The screen should turn on and show battery voltage. 3.

How many homes can a kilowatt solar system power?

Kilowatt (kW): How we measure the size of a home solar panel system. A kilowatt is just 1,000 watts. Megawatt (MW): Some commercial solar projects are over one MW in capacity. One MW = 1,000 kilowatts. For reference, one MW of solar can power about 173 homes, according to the Solar Energy Industries Association (SEIA).

How much power does a solar system take?

Your TV doesn't draw 15A all the time when it is on. The outlets deliver 120VAC at up to 15A. Similarly, the solar system will deliver 150V at up to 30A - but your battery charger doesn't have to take all 30A. Learning is good, but starting with things that can go boom and burn down your house make poor learning projects.

What is the production ratio of a solar system?

Production ratio: The amount of electricity produced by a solar system in one year (measured in kWh) divided by the size of the system (measured in W). This depends on factors such as the weather, climate, and condition of your solar panel system.

## What does the Russian home solar integrated machine 15a mean

---

### Contact Us

---

For catalog requests, pricing, or partnerships, please visit:  
<https://websparafotografos.es>