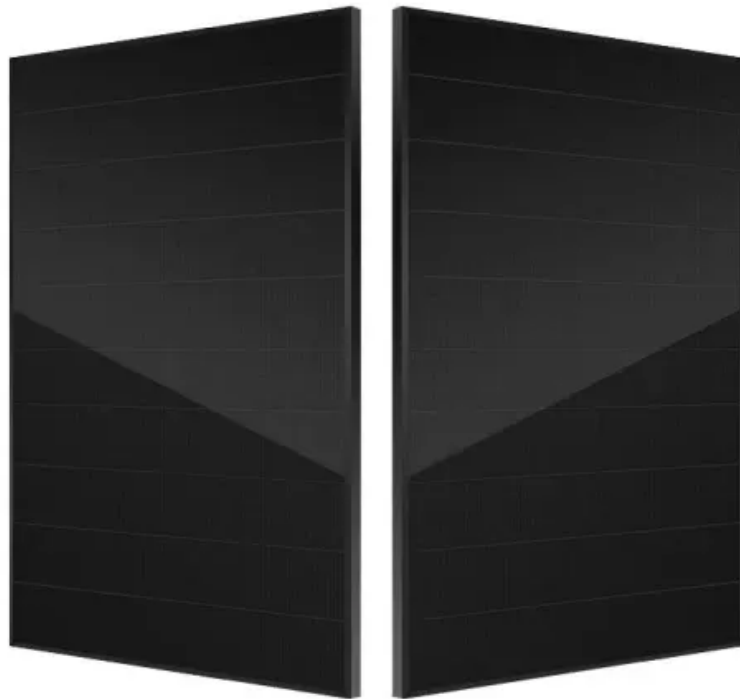


## ContainerPower Energy Solutions

# Three-phase inverter and grid-connected inverter



## Overview

---

What is a three-phase inverter?

This project focuses on designing and simulating a three-phase inverter intended for grid-connected renewable energy systems such as solar PV or wind turbines. The inverter converts DC power from renewable sources into AC power synchronized with the grid, enabling efficient and stable integration of renewable energy into the electrical grid.

How efficient is a three-phase grid connected voltage source inverter?

en done in this thesis . 6.2. Future Work  
Designed three-phase grid connected voltage source inverter presented in this thesis has reached 22.32 kW peak output power with a 98% efficiency an a minimum of 3.84% total harmonic distortion of line current at peak output power. Although most of the performance objectives has been fulfilled, in.

Can a three-phase inverter synchronize with a conventional AC grid?

Integrating these into the conventional AC grid requires power electronics converters, particularly inverters that produce high-quality AC waveforms synchronized with the grid. This project simulates a three-phase inverter topology widely used in grid-tied renewable applications, focusing on efficiency and power quality.

Can a three-phase inverter be used in grid-tied renewable applications?

This project simulates a three-phase inverter topology widely used in grid-tied renewable applications, focusing on efficiency and power quality. Design a three-phase inverter that converts DC input to a balanced three-phase AC output. Implement sinusoidal Pulse Width Modulation (SPWM) to control output voltage and frequency.

What is the DC link voltage of a three phase inverter?

the DC link voltage of the three phase inverter to 700 V DC, which is the fixed

DC link voltage regulated by the three-phase inverter in steady state grid connected operation. Voltage source inverter starts in open loop switching mode just after DC link voltage reaches 50 V DC. Until the grid connection, three-phase.

How to calculate f grid connected three-phase voltage-source inverter efficiency?

f grid connected three-phase voltage-source inverter is calculated. In order to calculate the efficiency, input power of  $p_v(av) = 15.2 \text{ AG} = 436 \text{ W/m}^2$   $T_m = 47 \text{ }^\circ\text{C}$  Figure 5-22: PV array average voltage,  $v_{pv}(av)$  (blue), PV array average current,  $i_{pv}(av)$  (magenta), DC link voltage

## Three-phase inverter and grid-connected inverter

---

### Contact Us

---

For catalog requests, pricing, or partnerships, please visit:  
<https://websparafotografos.es>