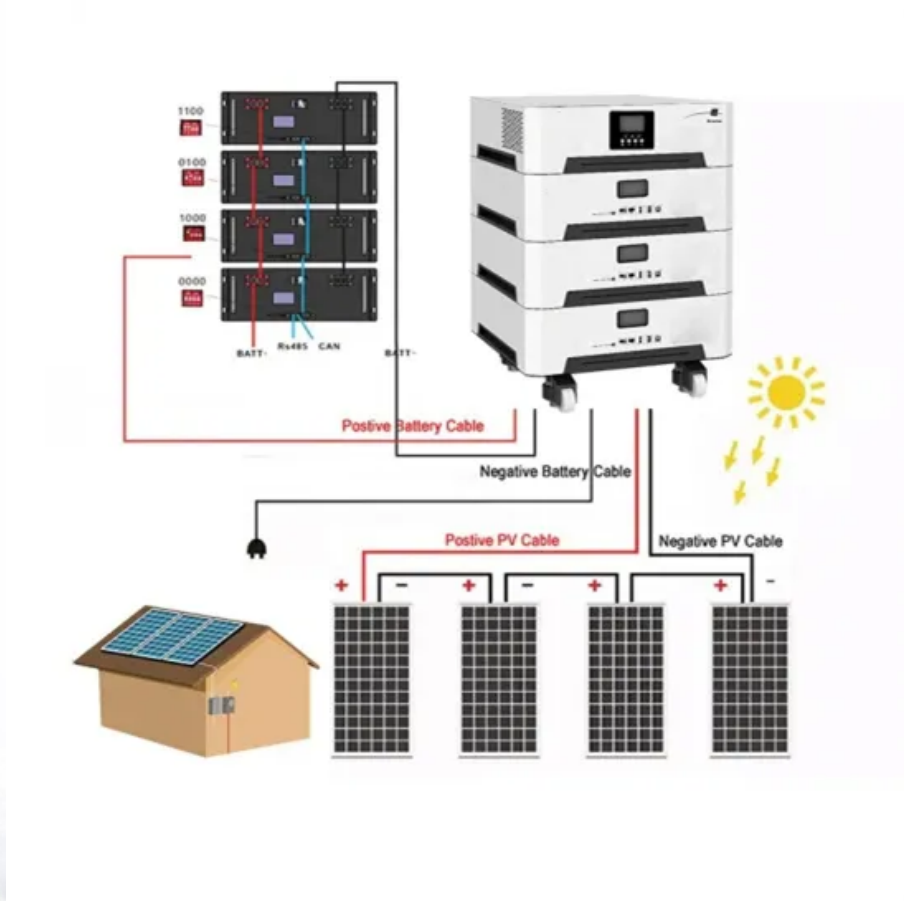


ContainerPower Energy Solutions

Can microinverters be connected to solar panels of different power levels



Overview

It's not recommended as our current microinverters are designed to be connected to one panel.

It's not recommended as our current microinverters are designed to be connected to one panel.

The main factor differentiating microinverters from traditional inverters is that they operate at the panel level rather than the solar panel system as a whole. Microinverters are categorized as module-level power electronics (MLPE). Therefore, these grid-tie inverters have much smaller power.

I currently have solar panels that are 225 watt, 29.5 volt (pmax), 7.63 amps (pmax imp). It seems to me that if I put 2 of my panels in series that they would be under the specs that the Enphase IQ7X Micro Inverter shows. Is there any reason this setup would not work?

Thanks for your time.

When installing solar panels, the choice between microinverters and power optimizers can have significant implications for performance, reliability, and cost. Both technologies enhance the efficiency of solar panels by addressing challenges such as shading, orientation, and mismatch losses.

With the new generation of high-power panels exceeding 500W and even 550W, I'm interested in understanding whether there are any Microinverters out there compatible with these new high-power panels?

Voc is 49.65V @ 25C and after calculating for a minimum of 0C, increases to just over 53.0V, so a.

What are solar microinverters?

A solar inverter is a critical component within a solar installation. It translates the direct current (DC) generated by solar panels into alternating current (AC) in a manner that's compatible with the electrical grid. In addition to this basic

function, modern.

Operating conditions for Photovoltaic (PV) systems can be optimized with Microinverters or Power Optimizers on a module level. These devices operate differently but optimize modules using similar tracking techniques to reach the Maximum Power Point (MPP) for each module considering the I-V Curve. Should you use a microinverter or a central solar inverter?

Suppose that in the future, your energy needs will rise. Instead of matching a central solar inverter's power output to your new system size, you can use microinverters to add more panels. You can expect a longer lifespan because the microinverter guarantee is often for the same time as the connected panels (usually 25 years).

Can a microinverter be installed on a solar panel?

For example, a typical Enphase IQ8+ microinverter is rated for a peak output power of 300 VA and an input power of 235-440+ W, meaning you can install it on a solar panel with a minimum of 235 W and a maximum of around 440 W power output.

Do solar panels need inverters?

Every solar panel system requires inverters. They convert the DC power generated from your panels into an alternating current (AC) to power your home. Among all types of inverters, microinverters stand out as the most popular due to their compliance with safety regulations and the National Electrical Code.

What are solar microinverters?

Microinverters are small electronic devices that convert direct current (DC) into alternating current (AC). One microinverter could fit the palm of your hand. The main factor differentiating microinverters from traditional inverters is that they operate at the panel level rather than the solar panel system as a whole.

Do microinverters reduce solar energy production?

For instance, if a few solar panels in a solar array are partially shaded by trees, chimneys, or nearby buildings, microinverters ensure that these shaded panels do not reduce the energy production of the unshaded ones.

Can you increase the number of microinverters if you upgrade your solar system?

Over time, you can increase the number of microinverters if you plan to upgrade your solar system. Suppose that in the future, your energy needs will rise. Instead of matching a central solar inverter's power output to your new system size, you can use microinverters to add more panels.

Can microinverters be connected to solar panels of different power

Contact Us

For catalog requests, pricing, or partnerships, please visit:
<https://websparafotografos.es>