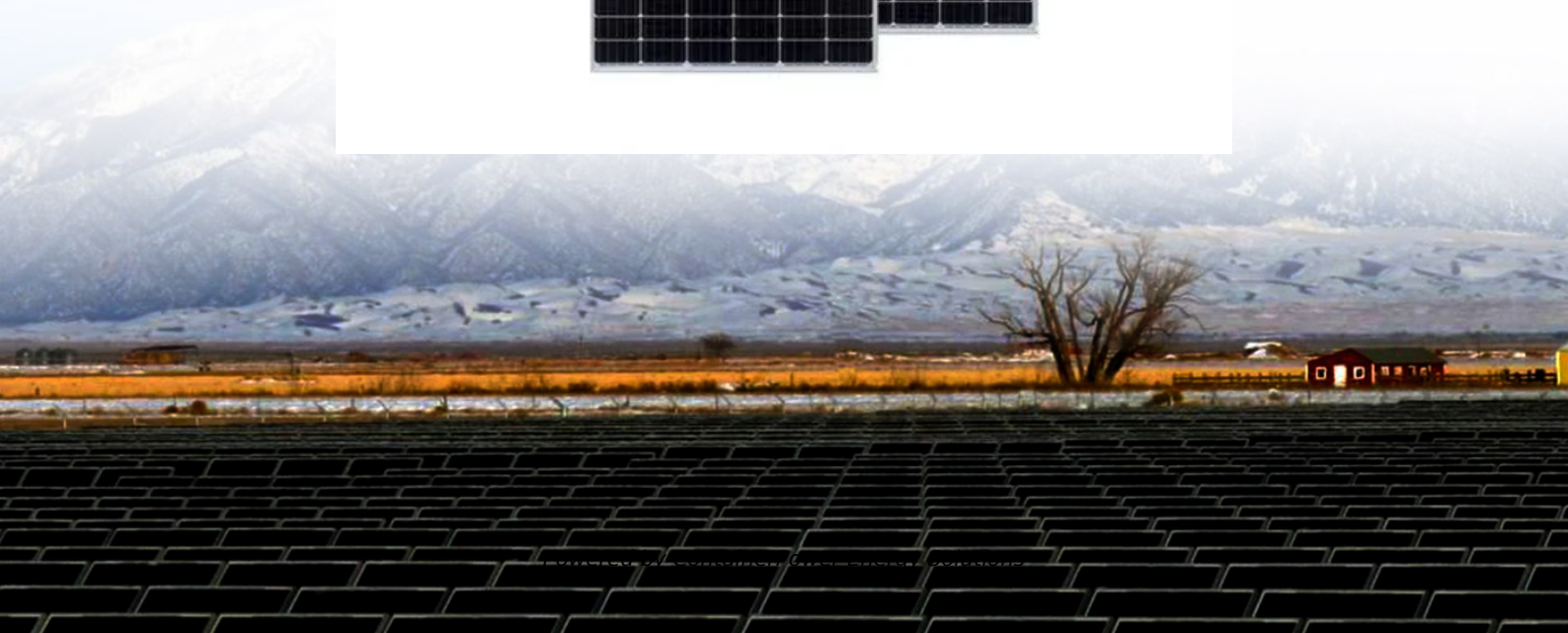


ContainerPower Energy Solutions

Battery planning location for building communication base stations



Overview

What makes a telecom battery pack compatible with a base station?

Compatibility and Installation Voltage Compatibility: 48V is the standard voltage for telecom base stations, so the battery pack's output voltage must align with base station equipment requirements. **Modular Design:** A modular structure simplifies installation, maintenance, and scalability.

Which battery is best for telecom base station backup power?

Among various battery technologies, Lithium Iron Phosphate (LiFePO₄) batteries stand out as the ideal choice for telecom base station backup power due to their high safety, long lifespan, and excellent thermal stability.

How do you protect a telecom base station?

Backup power systems in telecom base stations often operate for extended periods, making thermal management critical. Key suggestions include: **Cooling System:** Install fans or heat sinks inside the battery pack to ensure efficient heat dissipation.

What is a base station power system?

The base station power system serves as a continuous "blood supply pump station," responsible for AC/DC conversion, filtering, voltage stabilization, and backup power. Its purpose is to ensure the uninterrupted operation of base station equipment.

What is a communication base station?

In the vast telecommunications network, communication base stations play a frontline role. Positioned closest to end users, they serve as gateways for processing customer requests and managing data flow. In the words of "Interesting Communication Engineering Drawings," these stations act like "business trackers," always vigilant to:

What does a base station do?

The base station, positioned between users and data centers, is the first responder to user requests. It relays signals efficiently, ensuring users stay connected. This image highlights the compact but comprehensive nature of base stations, showcasing their integration of protective enclosures, power systems, and antennas. 3.

Battery planning location for building communication base stations

Contact Us

For catalog requests, pricing, or partnerships, please visit:
<https://websparafotografos.es>